



“GNOME” Centrifugal Pump

“GNOME” Centrifugal Pump

The ideal domestic water supply pump suitable for hot or cold water or brine circulation. It is particularly useful as a transfer unit for pumping from underground water tanks to gravity supply roof tanks. It may be controlled by manual switch or made automatic by use of a float switch. Being a centrifugal pump it is very quiet and has no pump hammer, pulsation or vibration.



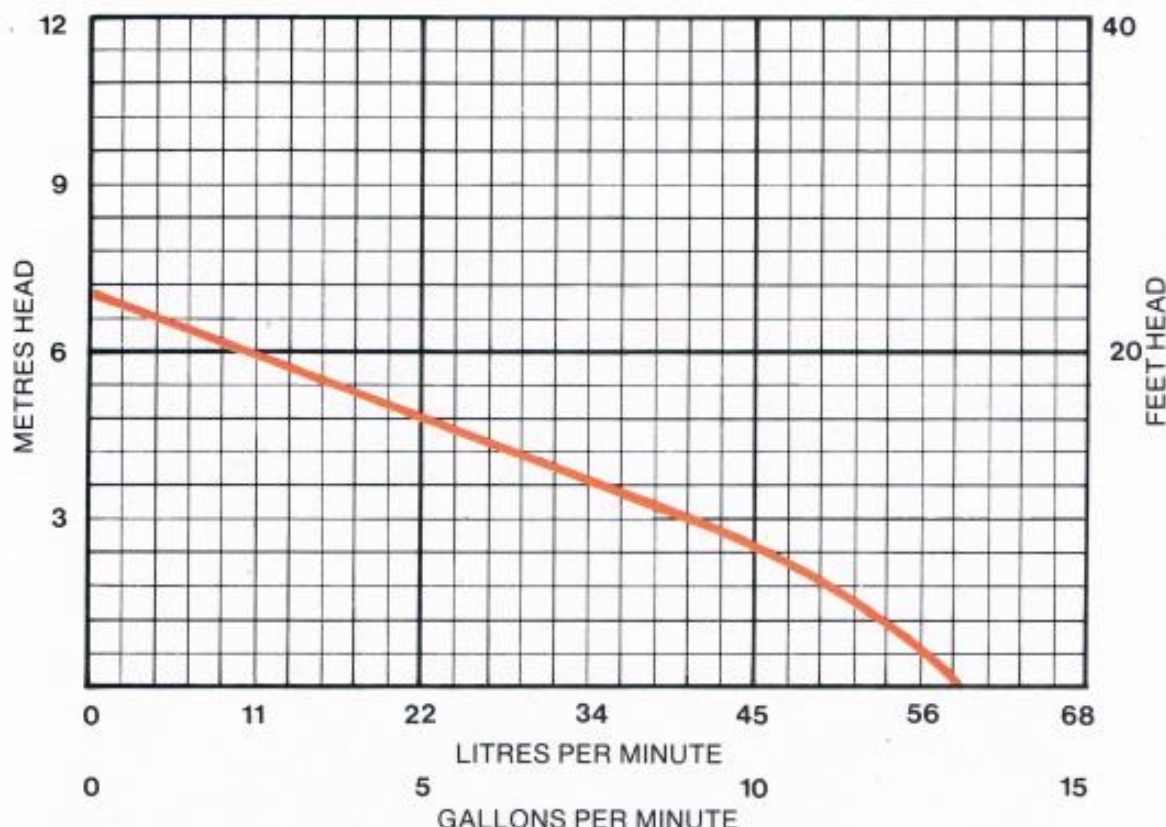
WHISPER QUIET UP TO 3,400 LITRES PER HOUR

SPECIFICATIONS

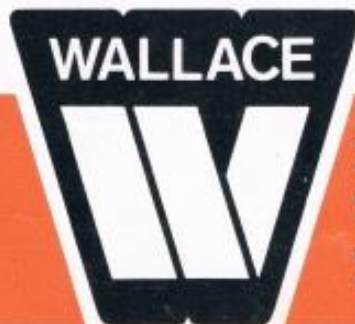
Brass pump Volute, impeller and back plate, accurately machined to provide balanced running. Volute may be positioned four ways to vary delivery position. Suction and delivery machined externally to $\frac{3}{4}$ " B.S.P. internally to $\frac{1}{2}$ " B.S.P. Impeller is of enclosed type of correct hydraulic design, machined all over. Fastenings Brass and Cadmium plated steel. The gland is of the mechanical unit type, having a carbon wearing face and neoprene sealing gasket, with automatic adjustment for wear on the running faces. There is no wear on the motor shaft and the motor shaft does not come in contact with the liquid being pumped.

The motor is split phase induction type, 2850 R.P.M. with Class E insulation. It is of ventilate drip proof design with continuous maximum rating to BS170: It is ball bearing and will give many years service without lubrication. The impeller is mounted direct on the tapered motor spindle. Thermal overload protection is built into the motor and provided with a reset button.

PERFORMANCE



Service and Spare Parts are Always Available at Recognised Wallace Dealers Throughout New Zealand



1 metre = 3.28 Feet. 1 Gallon = 4.546 Litres

AUCKLAND
35 Maurice Rd, Penrose, PO Box 12-174, Auckland.
Tel: 661-049.

WHANGAREI
Albert St, PO Box 120, Whangarei. Tel: 88-132.

HAMILTON
Cnr. Tristram & Liverpool Streets, PO Box 9342, Tel: 391-201.

NEW PLYMOUTH
170 Gill St, PO Box 4067, New Plymouth. Tel: 75-975.

WELLINGTON
21 Regent St, Petone, PO Box 38-384, Petone. Tel: 684-132.



(Circa 1984)

Operating instructions for WALLACE GNOME CENTRIFUGAL PUMP

GENERAL:

Do not run this pump dry or damage may result to the mechanical seal.

INSTALLATION:

Maximum suction lift is 15 ft. vertically. Due allowance must be made for loss of suction head due to length of horizontal portion of suction line. As an aid to priming a tee piece can be inserted in the delivery line close to the pump and fitted with a short vertical length of pipe with plug or stop cock. This is not necessary where flooded suction exists. See that all pipe joints are properly made. For a suction lift fit a Clapet foot valve vertically with at least two feet of water above it if possible. A continuous fall even if slight, from pump suction to water should be maintained to avoid air pockets. Avoid the use of sharp bends, etc. Keep the suction line as short as practicable. Use the same size pipe as indicated by the threading of the suction flange. Where flooded suction exists use a check valve on the horizontal suction line.

PRIMING:

Remove priming plug in priming tee or in top of pump casing and completely fill the suction pipe and pump casing until all air is expelled, and water free from bubbles flows from the hole. With the pressure outfit, close off the tank delivery line before priming the pump. Of course with a flooded suction the pump will self prime, but removal of the priming plug in the casing will ensure that all air is expelled. If foot valve is tight, water level should remain steady in the casing. Replace priming plug.

STARTING:

Switch on power but stop pump promptly if water does not come in a few seconds. If no water comes check over as under "Troubles".

TROUBLES:

Pump fails to deliver water. Reprime, check suction lift line for leaks — check total suction lift — check direction of rotation — check for obstruction in suction line.

Pump delivers a little water then flow fails. Some air probably remains in pump, reprime — air pocket in suction line, suction lift too high, worn gland seal (after considerable service), foot valve too close to water level which may fall when pumping starts.

Fall off in Capacity. Air leaks in suction line or gland, suction pipe or impellor partly obstructed, foot valve blocked.

Pump Noisy. Solid obstruction in pump case, bent shaft, rotating parts binding, worn motor bearings. **Any of these defects require expert attention.**

MAINTENANCE:

Keep all lines leak free. Leaking gland requires replacement, and is best done by a serviceman. Motor ball races are grease packed and should not require attention for some years. Pressure outfit motors have reset button as overload protection. If button jumps out often have electrician check cause. If motor starts and stops rapidly tank may be water logged. To rectify remove pressure gauge to admit air and drain off all water in tank. Replace gauge, check all joints are tight, reprime and start up. Gauge and switch joints can be tested as pressure builds up by using lighted match.

Note that as suction lift increases the maximum pressure obtainable decreases. Flooded suction will permit pressures up to 28 lbs. At 15 ft. (the maximum suction lift) the maximum pressure will be reduced to 20 lbs.

Formally supplied by:

D. McL. Wallace Ltd

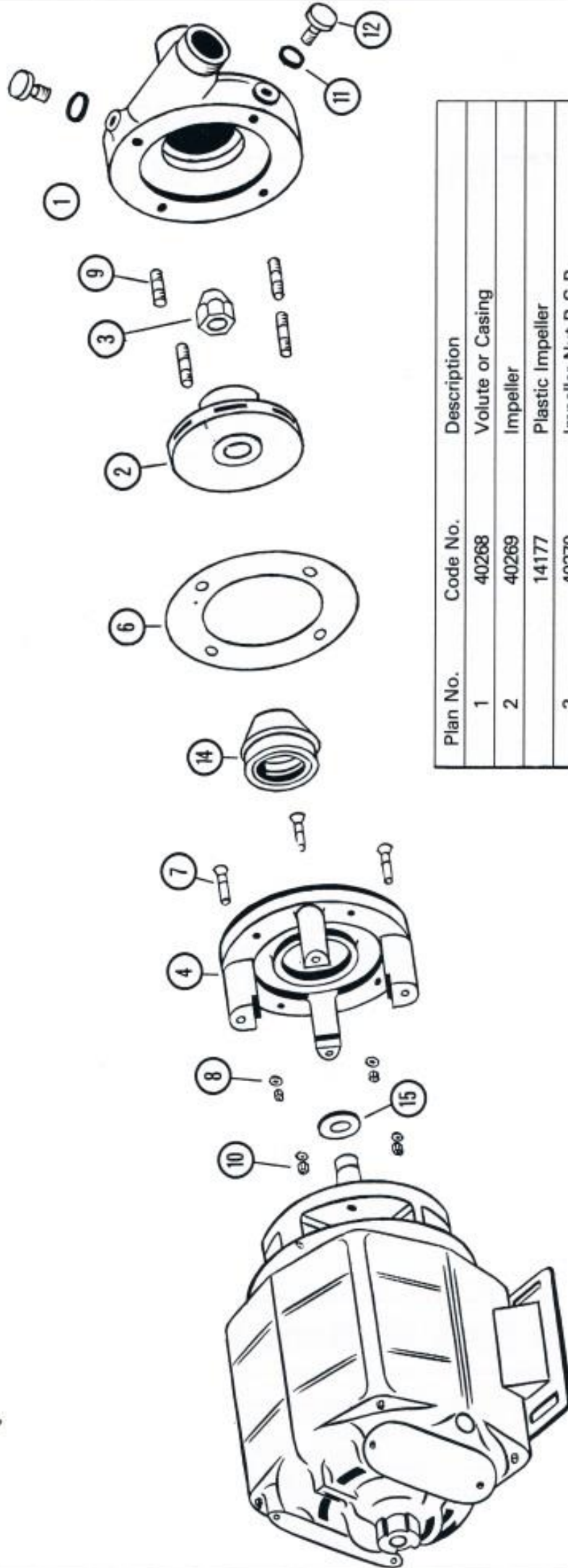
35 Maurice Road Penrose, PO Box 12-174, Auckland, New Zealand. Telephone 641-049. Telex: NZ 2913

Branches

Whangarei	Albert Street	P.O. Box 120	Telephone 88-132
Hamilton	Cnr Tristram & Liverpool Streets	P.O. Box 9342	Telephone 391-201
New Plymouth	170 Gill Street	P.O. Box 4067	Telephone 75-975
Wellington	8-10 Hautonga Street, Petone	P.O. Box 38-384	Telephone 684-132
Palmerston Nth	10 Edgeware Road	P.O. Box 981	Telephone 76-330

1/2" GNOME PUMP

Code 80200



Plan No.	Code No.	Description
1	40268	Volute or Casing
2	40269	Impeller
	14177	Plastic Impeller
3	40270	Impeller Nut B.S.P.
4	40271	Adaptor
6	13043	Gasket
7	11036	Brass C/S Screw
8	12037	Washer
9	11013	Cadmium Plated Stud
10	11014	Brass Plated Nut
11	12036	3/8" Fibre Washer
12	40272	Drain Plugs
14	13044	Carbon Seal
15	14042	Water Slinger

When ordering spare parts please use Code No.